

GUIDE RAIL GS-LGB30

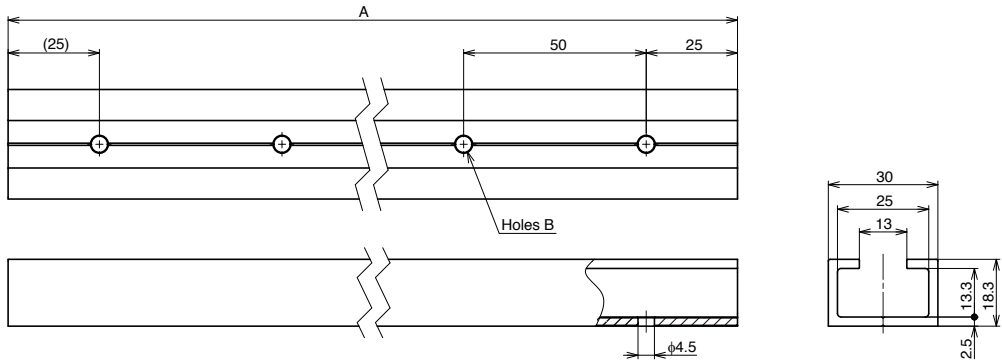


[Recommended Screws]

- Hexagon socket button head screw M4
- Binding head screw M4
- Binding head tapping screw 4

[Remarks]

- Mounting holes and both ends are not surface treated.
- Do not use under moment load.



Item Name	A	B	Material	Finish	Weight (g/pc)
GS-LGB30-400	400	8	Aluminium Alloy	Anodised Silver	195
GS-LGB30-800	800	16			390
GS-LGB30-2000	2000	40			875