

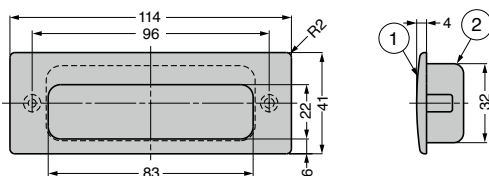
STAINLESS STEEL RECESSED PULL GS-HH-KS114

SUS316

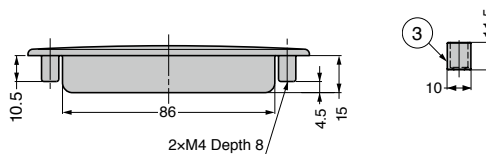
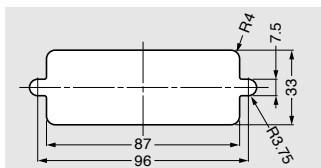


[Parts Included]

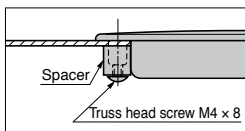
- Spacer
- For sheet metal t = 2: truss head tapping screw M4 × 8 (SUS)
- For wood panel t = 20: truss head tapping screw M4 × 15 (SUS)



[Cut Out Dimensions]



[Installation]



No.	Part Name	Material	Finish
①	Body	Stainless Steel (SCS14)	Polished/Satin
②	Cup	Stainless Steel (SUS304)	Satin
③	Spacer		-

※SCS14 is equivalent of SUS316.

Item Name	Finish	Weight (g)
GS-HH-KS114M	Polished	110
GS-HH-KS114S	Satin	