

STAINLESS STEEL RING PULL GS-980641, GS-980642

TEST METHOD 2 SUS

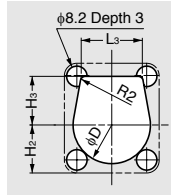
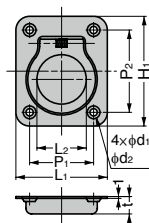


- The handle retracts automatically by a spring when not in use.

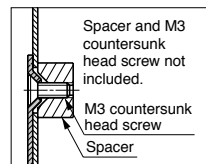
[Parts Included]

- GS-980641: Tapping screw 3 × 16 (SUS)
- GS-980642: Tapping screw 3.5 × 16 (SUS)

[Cut Out Dimensions]



[For Sheet Metal]



Item Name	Material	Finish	L ₁	L ₂	L ₃	H ₁	H ₂	H ₃	D	t	P ₁	P ₂	d ₁	d ₂	Load Capacity N	Load Capacity kgf	Weight (g)
GS-980641	Stainless Steel	Polished	38	18	24.5	44	19	19.5	31	10	28	34	4	6.2	196	20	21
GS-980642	(SUS304)		50	27	25	60	25	25	41	9.5	35	45	4.4	7	245	25	36