

STAINLESS STEEL RING PULL GS-26901

SUS316

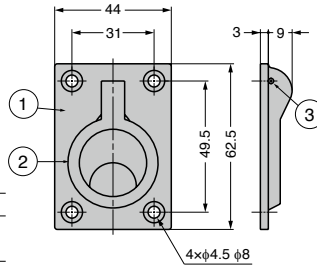


[Remarks]

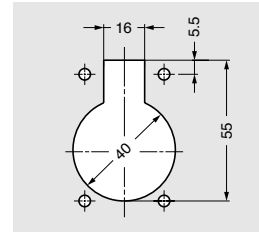
- Please install the top and bottom correctly to prevent handle from hanging out.

[Recommended Screws]

- Countersunk head tapping screw 3.5



[Cut Out Dimensions]



No.	Part Name	Material	Finish / Colour
①	Body	Stainless Steel (SCS14)	Mirror
②	Handle	Stainless Steel (SUS304)	Plain
③	Pin	Stainless Steel (SUS304)	Plain

Item Name	Material	Finish	Weight (g)
GS-26901	Stainless Steel (SCS14)	Polished	85

※SCS14 is equivalent of SUS316.