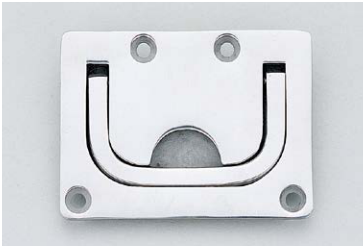


STAINLESS STEEL RING PULL GS-26700

SUS316



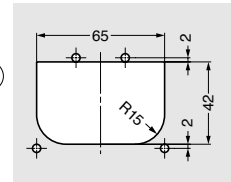
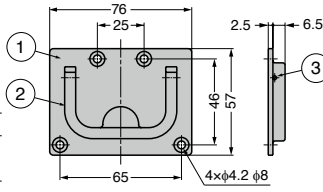
[Remarks]

- Please install the top and bottom correctly to prevent handle from hanging out.

[Recommended Screws]

- Countersunk head tapping screw 3.5

[Cut Out Dimensions]



No.	Part Name	Material	Finish / Colour
①	Body	Stainless Steel (SCS14)	Mirror
②	Handle		
③	Pin	Stainless Steel (SCS14) Stainless Steel (SUS304)	Plain

Item Name	Material	Finish	Weight (g)
GS-26700	Body and Handle : Stainless Steel (SCS14) Pin : Stainless Steel (SUS304)	Mirror	120

※SCS14 is equivalent of SUS316.