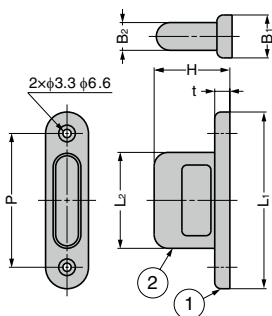


STAINLESS STEEL PULL HS

SUS



- Elastomer material provides soft and comfortable touch feeling.
- Stainless steel is used for the base part.
- Stainless steel pull US **1** also available.

[Parts Included]

- Raised Countersunk head wood screw 3.1 × 20 (SUS)

LARGE HANDLES

HANDLES (FRONT SCREW MOUNT)

HANDLES (BACK SCREW MOUNT)

RECESSED PULLS

PULLS & KNOBS

LATCH HANDLES

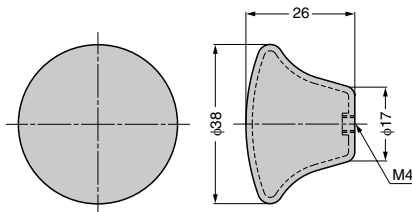
No.	Part Name	Material	Finish / Colour
①	Base	Stainless Steel (SUS304)	Satin
②	Knob	Elastomer (TPE)	Black

RHS	CAD	Item Code	Item Name	L ₁	L ₂	P	B ₁	B ₂	H	t	Weight (g)	Box (pcs)	Carton (pcs)
		100-012-192	HS-60S	60	30	44	16	9	25	5	13	40	400
		100-012-193	HS-70S	70	38	53	17	11	30	6	20	30	300

Refer to **1** : P.640

STAINLESS STEEL KNOB RS-38S

NSF SUS

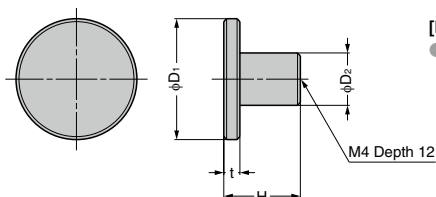


[Parts Included]

- Truss head screw M4 × 30 (SUS)

RHS	CAD	Item Code	Item Name	Material	Finish	Weight (g)	Box (pcs)	Carton (pcs)
		100-011-198	RS-38S	Stainless Steel (SUS304)	Satin	20	20	200

KNOB EXSEL



[Parts Included]

- Truss head screw M4 × 25

RHS	CAD	Item Code	Item Name	Material	Finish	D ₁	D ₂	H	t	Weight (g)	Box (pcs)	Carton (pcs)
		100-012-080	EXSEL20	Aluminium Alloy	Stainless Steel/Anodised	20	10	18	4	5	48	1152
		100-012-081	EXSEL25			25	11	18.5	4.5	8.5	48	1152
		100-012-082	EXSEL30			30	12	19	5	15	48	1152
		100-012-083	EXSEL35			35	13			16.5	24	576
		100-050-636	EXSEL20BL			20	10	18	4	5	48	1152
		100-050-637	EXSEL25BL		25	11	18.5	4.5	8.5	48	1152	
		100-050-638	EXSEL30BL		30	12	19	5	15	48	1152	
		100-050-639	EXSEL35BL		35	13			16.5	24	576	