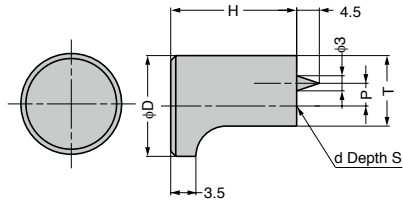


KNOB GS-GLA



[Remarks]

● Pin position and size may vary.

[Parts Included]

- GS-GLA-12: Truss head screw M3 x 25
- GS-GLA-16, GS-GLA-20: Truss head screw M4 x 25

Item Name	Material	Finish	D	H	T	P	d	S	Weight (g)
GS-GLA-12	Brass	White Bronze Plating	12	18	8.5	3.5	M3	8	14
GS-GLA-16			16	22	11	4	M4	10	29
GS-GLA-20			20	25	14	4.5			52