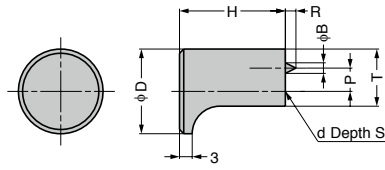


KNOB GS-SGL



- Compliant with flame retardancy standard UL94-HB.

[Remarks]

- Pin position and size may vary.

[Parts Included]

- GS-SGL-12: Truss head screw M3x 28
- GS-SGL-16, GS-SGL-20: Truss head screw M4x 28

Item Name	Material	Finish	D	H	T	P	B	R	d	S	Weight (g)
GS-SGL-12	ABS	Satin Chrome	12	18	8.5	3	2	2	M3	9.5	1
GS-SGL-16			16	22	11	4					
GS-SGL-20			20	25	13.5	5	2.5	M4	15.5	3.5	