

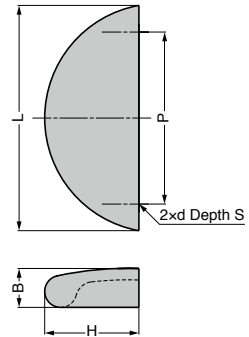
PULL GS-RD



- Easy to grasp.

[Parts Included]

- Truss head screw



Item Name	Material	Finish	L	P	H	B	d	S	Weight (g)	Screw
GS-RD-45CR	Zinc Alloy (ZDC)	Chrome	45	32	19	8.2	M3	7	22	M3x 28
GS-RD-45WB		White Bronze Plating								
GS-RD-45BN		Black Nickel								
GS-RD-45SL		Paint/Silver								
GS-RD-55CR	Zinc Alloy (ZDC)	Chrome	55	42	23	9.5	M4	8	35	M4x 28
GS-RD-55WB		White Bronze Plating								
GS-RD-55BN		Black Nickel								
GS-RD-90CR	Zinc Alloy (ZDC)	Chrome	90	74	25.5	10.5	M4	9.5	63	M4x 28
GS-RD-90WB		White Bronze Plating								
GS-RD-90BN		Black Nickel								