

PUSH KNOB GS-PK04

INSTRUCTION



- Knob can be pushed in when not in use. And no projection from the door surface.
- Able to install to door thickness 15~35mm with cap included, 29~39mm with GS-PK04VB (sold separately).

[Remarks]

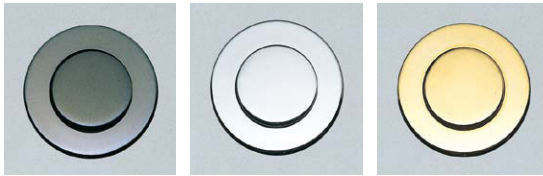
- When processing the mounting holes on wooden door, please clear wood scraps before installation.
- When installing knob body and supplied screws, do not tighten with excessive force. (Recommended tightening torque: 4kgf · cm)
- Bracket for sheet metal not included.

[Parts Included]

- Truss head screw M3 × 20

[Sold Separately]

- Cap for thick door (GS-PK04VB)



BN

CR

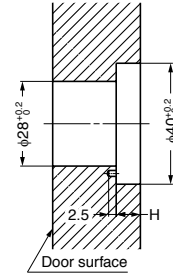
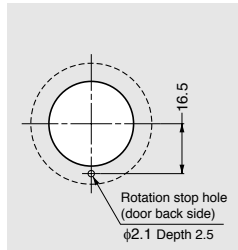
GA



DN

GS-PK04VB (sold separately)

[Cut Out Dimensions]

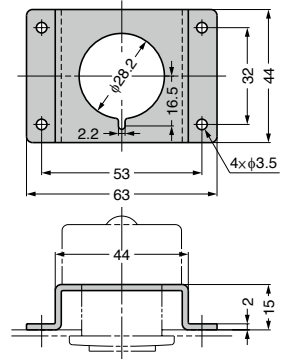
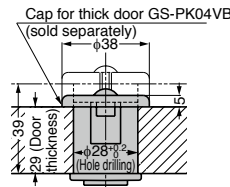
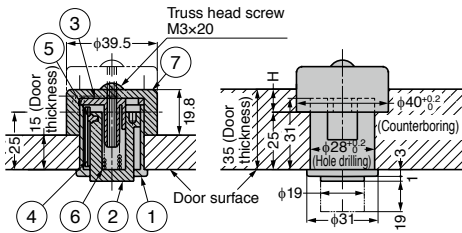


[Door Thickness 15~25]

[Door Thickness 26~35]

[Door Thickness 29~39]

[Bracket for Sheet Metal] Example



No.	Part Name	Material	Finish / Colour
①	Body	ABS	See Below
②	Knob	Zinc Alloy (ZDC)	Coloured Zinc Chromate
③	Cover		
④	Guide Plate		
⑤	Rotor	Stainless Steel	Plain
⑦	Cap	ABS	Black
-	Spring Pin	Stainless Steel	-

[Body]

Item Name	Finish	Door Thickness (DT) ※	Bore Depth H	Weight (g)
GS-PK04GA	Gold	15~35	DT 15~25 : H = None (φ 28 Hole), DT 26~35 : H = DT - 25	76
GS-PK04CR	Chrome			
GS-PK04BN	Black Nickel			
GS-PK04DN	Nickel			

※ When using the supplied cap.

[Cap for Thick Doors] Option

Item Name	Door Thickness	Bore Depth H	Material	Finish	Weight (g)
GS-PK04VB	29~39	None (φ 28 Hole)	Stainless Steel (SUS430)	Plain	13