

## LATCH HANDLE MDHL

SUS



LARGE HANDLES

HANDLES (FRONT SCREW MOUNT)

HANDLES (BACK SCREW MOUNT)

RECESSED PULLS

PULLS &amp; KNOBS

LATCH HANDLES

- Latch handle for sliding doors of machine tools, etc.
- Latch is released when pulling the handle.
- Brackets and pipes can be combined freely.
- Two types of brackets available: In-line type and offset type.
- Pipes are made of stainless steel or carbon fibre reinforced plastic, either has 6 lengths available. By cutting the pipe, the total length can be changed freely.
- Carbon fibre reinforced plastic pipes are subject to UV-cut treatment to prevent discoloration.  
What is carbon fibre reinforced plastic?  
It is a light weight, high-strength materials also widely used for aircraft, etc., contributing to the weight reduction of structure. Also, the delicate mesh pattern brings a unique texture and high-quality feeling.
- Pipes may be sold separately.
- Linear rail for sliding doors with latch handles also available.
- Design door handle MDH 1 of the same appearance without latch also available.

## [Remarks]

- Brackets and pipes have separate item numbers. Please order together by indicating each specification.
- Bracket is sold by piece.
- Hold the centre of handle for operation. Otherwise, the latch may not operate properly.

Video Link



## [Bracket]



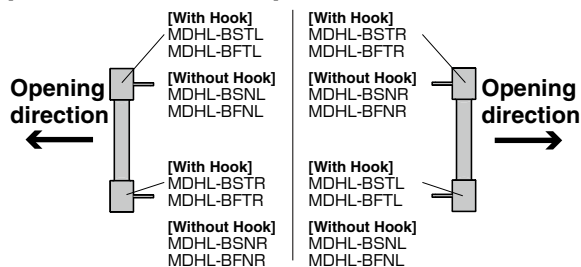
MDHL-BSTL

MDHL-BFTL



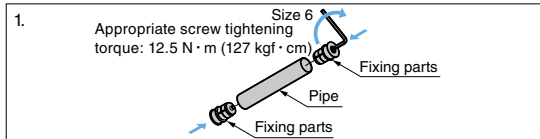
DESIGN DOOR HANDLE MDH 1

## [Installation Direction of Bracket]

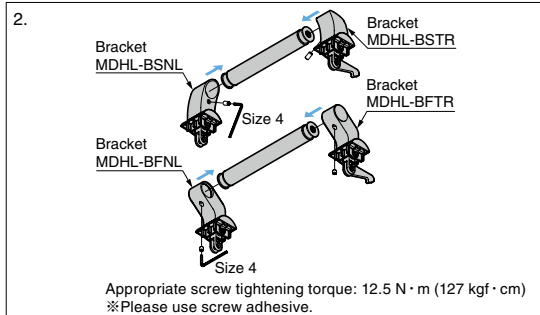


Refer to 1 : P.630

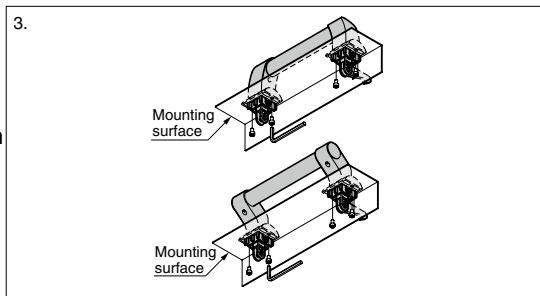
## [How to Install]



Insert the fixing parts (attached to the bracket) into both ends of the pipe until their flanges contact the pipe ends, and then tighten the screws with a hex key size 6 (not included).



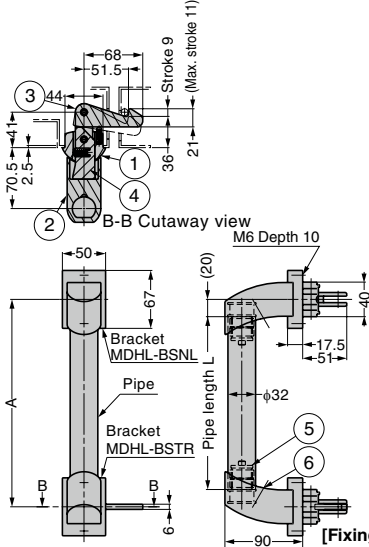
Insert the brackets on both sides into the pipe, and tighten the set screws (attached to the bracket) with a hex key size 4 (not included).



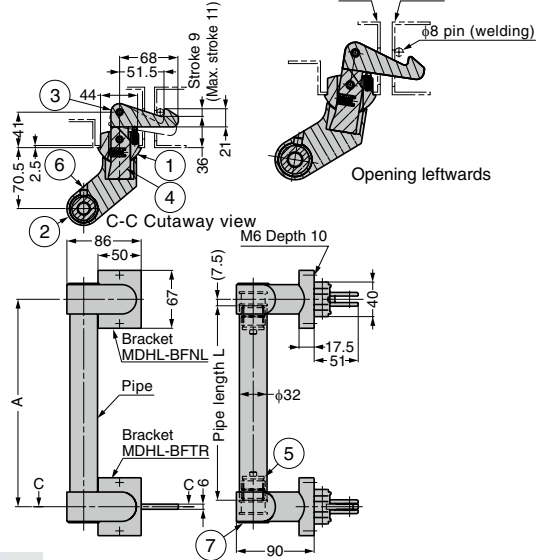
Fix on the mounting surface with M6 screws (not included).

**[Installation of Bracket and Pipe]**

Bracket MDHL-BS (in-line type)



Bracket MDHL-BF (offset type)

**[Bracket]**

No.	Part Name	Material	Finish / Colour
①	Base	Zinc Alloy (ZDC)	Matte Chrome
②	Arm	Zinc Alloy (ZDC)	
③	Hook	Steel (SPHC)	
④	Rotating Parts	Zinc Alloy (ZDC)	Plain
⑤	Fixing Parts	Zinc Alloy (ZDC)	
⑥	Hexagon Socket Set Screw M8 X 8	Stainless Steel	
⑦	Cap	POM	Black

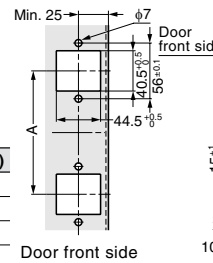
**[Fixing Parts⑤]****[Bracket]**

RoHS	CAD	Item Code	Item Name	Hook	Weight (g)	Box (pcs)	Carton (pcs)
✔	3D	140-025-544	MDHL-BSTL	w/	1004	1	1
✔	3D	140-025-545	MDHL-BSNL	w/o	940	1	1
✔	3D	140-025-546	MDHL-BSTR	w/	999	1	1
✔	3D	140-025-547	MDHL-BSNR	w/o	935	1	1
✔	3D	140-025-548	MDHL-BFTL	w/	1091	1	1
✔	3D	140-025-549	MDHL-BFNL	w/o	1026	1	1
✔	3D	140-025-550	MDHL-BFTR	w/	1095	1	1
✔	3D	140-025-551	MDHL-BFNR	w/o	1028	1	1

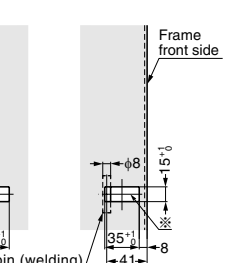
**[Pipe]**

RoHS	CAD	Item Code	Item Name	Bracket	Material	Finish	Pipe Length L	Mounting Hole Pitch A	Pipe Thickness	Load capacity N	Load capacity kgf	Weight (g)	Box (pcs)	Carton (pcs)
✔	3D	140-025-552	MDHL-SPS240	MDHL-BS	Stainless Steel (SUS304)	Satin	200	240	2	490	50	285	1	10
✔	3D	140-025-553	MDHL-SPS340				300	340				430	1	10
✔	3D	140-025-554	MDHL-SPS440				400	440				566	1	10
✔	3D	140-025-555	MDHL-SPS540				500	540				712	1	10
✔	3D	140-025-556	MDHL-SPS640				600	640				845	1	10
✔	3D	140-025-557	MDHL-SPS740				700	740				997	1	10
✔	3D	140-025-558	※MDHL-SPC240				200	240				-	25	-
✔	3D	140-025-559	MDHL-SPC340				300	340				107	25	-
✔	3D	140-025-560	MDHL-SPC440				400	440				142	25	-
✔	3D	140-025-561	※MDHL-SPC540				500	540				-	25	-
✔	3D	140-025-562	※MDHL-SPC640	600	640	-	13	-						
✔	3D	140-025-563	※MDHL-SPC740	700	740	-	13	-						
✔	3D	140-025-564	MDHL-FPS240	MDHL-BF	Stainless Steel (SUS304)	Satin	225	240	2	490	50	318	1	10
✔	3D	140-025-565	MDHL-FPS340				325	340				465	1	10
✔	3D	140-025-566	MDHL-FPS440				425	440				603	1	10
✔	3D	140-025-567	MDHL-FPS540				525	540				749	1	10
✔	3D	140-025-568	MDHL-FPS640				625	640				883	1	10
✔	3D	140-025-569	MDHL-FPS740				725	740				1032	1	10
✔	3D	140-025-570	※MDHL-FPC240				225	240				-	25	-
✔	3D	140-025-571	※MDHL-FPC340				325	340				-	25	-
✔	3D	140-025-572	※MDHL-FPC440				425	440				-	25	-
✔	3D	140-025-573	※MDHL-FPC540				525	540				-	25	-
✔	3D	140-025-574	※MDHL-FPC640	625	640	-	13	-						
✔	3D	140-025-575	※MDHL-FPC740	725	740	-	13	-						

※Made to order.

**[Cut Out Dimensions for Door]**

Door front side

**[Cut Out Dimensions for Frame]**

In the above drawings, the upper parts are for MDHL-BSNL or MDHL-BFNL, and the lower parts are for MDHL-BSTR or MDHL-BFTR.

When processing ※ marked part, noted to align it with the centre of hook ③ of bracket.