

# CABINET LOCK WITH DIAL GS-DIT-19 Clip-on Installation

INSTRUCTION



- Turn the dial to lock/unlock.
- Able to switch to Changing Mode or Fixing Mode:  
Changing Mode - Changing the key number according to users.  
Fixing Mode - Applied the same number as registered.
- One-touch installation.
- Possible to search the number to unlock with Search Key (sold separately).
- Case with latch.
- Possible to engrave any number on body above the dial.

**[Applications]**

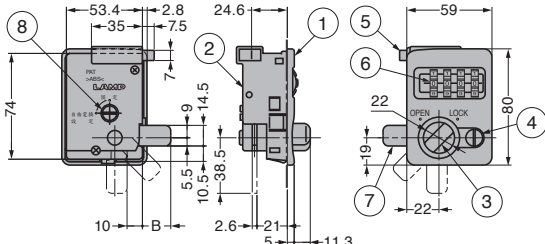
- Lockers in public space, etc.

**[Remarks]**

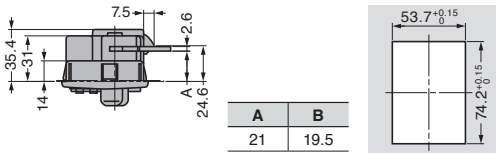
- For setting work, turn the dial to the password being used and open the door.
- First dial number is "0000".
- For security, please turn all dials when locking.
- Adjust number along the centre line to avoid malfunction.
- For sheet metal use. Bracket (for door thickness 8~18mm) available by made to order when installing to wood board.

**[Sold Separately]**

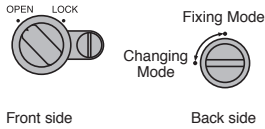
- Search key DIT-SK



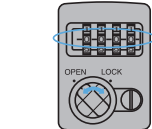
**[Cut Out Dimensions]**



**[Changing Mode]**

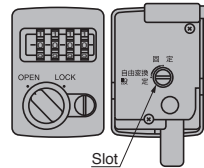


1. Turn the knob to "OPEN" on front side. Turn the slot to "Changing Mode" on back side.

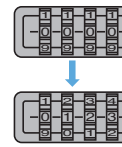


2. Set new number and turn the knob to "LOCK" on front side.

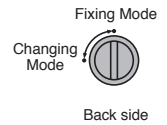
**[Fixing Mode]**



1. Turn the knob to "OPEN" on front side. Turn the slot to "Changing Mode" on back side.



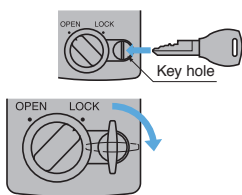
2. Set new number.



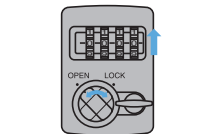
3. Turn the slot to "Fixing Mode" on back side.

※Before setting new number, please open the door.

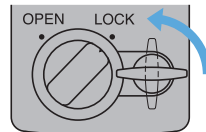
**[How to Search Dial Number] Using Search Key**



1. Insert Search Key and turn clockwise.



2. Turn each dials till click (the number clicked is your dial number).  
※Do not turn the dial with excessive force.



3. Turn Search Key counterclockwise and remove.



4. Turn the knob to "OPEN" to unlock.

No.	Part Name	Material	Finish/Colour
①	Body	ABS	White
②	Case		
③	Knob		
④	Cover		
⑤	Latch	POM	
⑥	Dial	PC	-
⑦	Cam	Steel (SPCC)	Coloured Zinc Chromate
⑧	Switching Shaft	PC	-

**[Body]**

Item Name	Door Thickness	Weight (g)
GS-DIT-19	0.8	162

**[Search Key] Sold Separately**

Item Name	Weight (g)
GS-DIT-SK	11