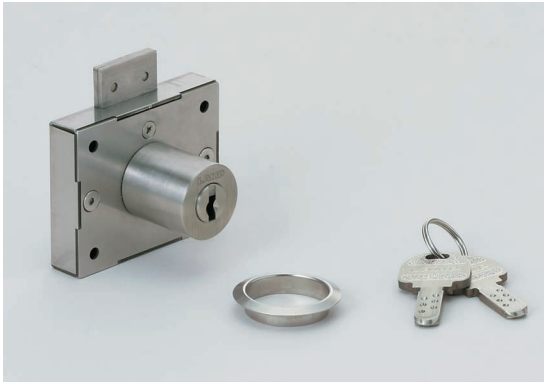


STAINLESS STEEL CABINET LOCK GS-3810S



- Nickel silver key with excellent corrosion and abrasion resistance. Durability with thick cam.
- Reversible key can be removed when locked and unlocked (360° rotation).
- For drawer and cabinet door application.
- Suitable for overlay doors.
- 12 key changes available. (Max. 300 key changes as special order)
- Master Key system (300 key changes) available at surcharge. (1 Master Key only.)
- Cam lock GS-3800S of the same material also available.

[Remarks]

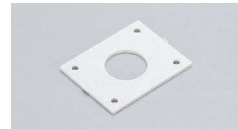
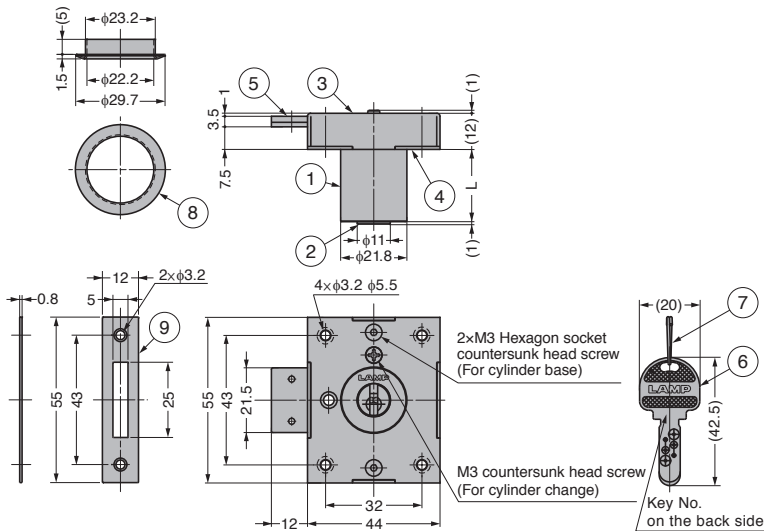
- Be sure to read the "Cautions"
- Not waterproof.

[Parts Included]

- Countersunk head wood screw 3.1 x 20, 2.1 x 10 (SUS)

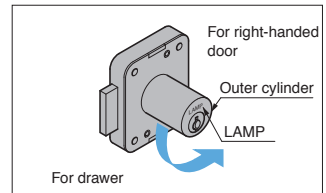
[Sold Separately]

- Spacer GS-6810-SP



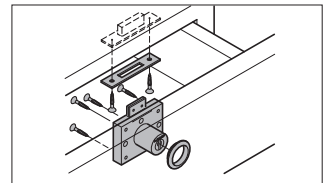
Spacer GS-6810-SP (sold separately)

[How to Switch: for Drawer/Right-handed Door Application]

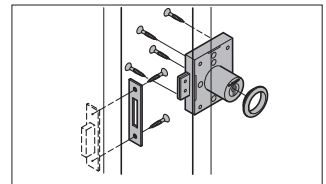


Turn the outer cylinder to the position for drawer or right-handed door and then fix with screws. The logo "LAMP" is to be forwarded upside.

[Installing to the drawer]



[Installing to the right-handed doors]



No.	Part Name	Material	Finish
①	Cylinder (Outer)	Stainless Steel (SUS303)	Satin
②	Cylinder (Inner)		
③	Body	Stainless Steel (SUS304)	Plain
④	Cylinder Base		
⑤	Dead Bolt		
⑥	Key	Nickel Silver	
⑦	Key Ring		
⑧	Surface Ring	Stainless Steel (SUS304)	
⑨	Strike		

※Cylinder pin is made of brass.

[Spacer] Sold Separately

Item Name	Weight (g)
GS-6810-SP	4

[Body]

Item Name	Key Type	Cylinder Diameter	L	Door Thickness	Weight (g)
GS-3810S-24-B	Key Different	21.8	24	24	180
GS-3810S-24-D	Key Alike			24	
GS-3810S-30-B	Key Different		30	30	195
GS-3810S-30-D	Key Alike				