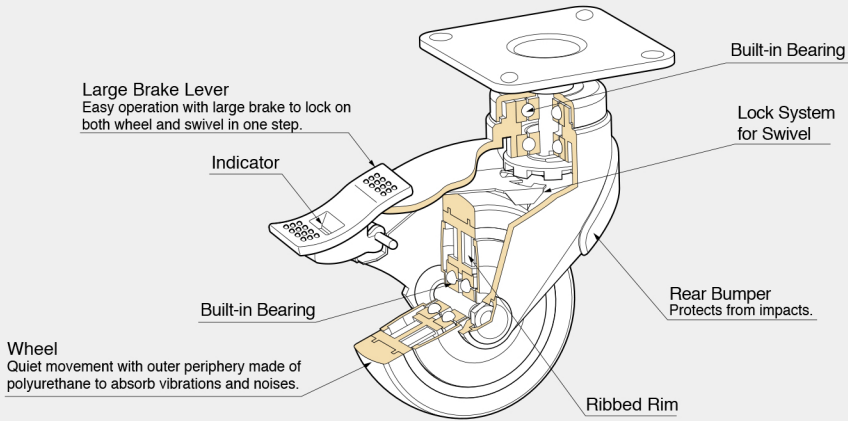


# DUAL BRAKE SYSTEM CASTER GS-EX-100

## Functional Caster Designed for Easy Operation



# DUAL BRAKE SYSTEM CASTER GS-EX-100P Plate Type

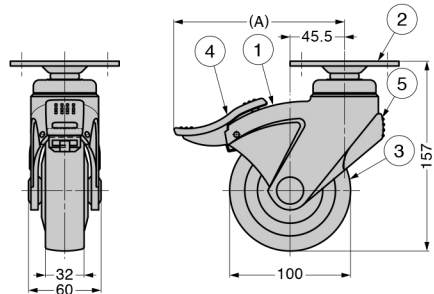
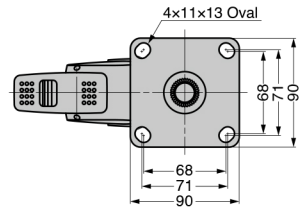
**LOAD CAPACITY 980 N**



- Brake indicator for easy recognition.
- Locks both wheel and swivel.
- Large brake lever for easy operation.

Since the brake lever protrudes the wheel, operation is unaffected even if the installation position of the caster is slightly inward from the edge of upper cabinet.

- Ball bearing equipped in both swivel and wheel to provide smooth movement.
- Rear bumper protects from impacts.
- W/o brake type has also front rubber bumper to protect foot.



No.	Part Name	Material	Finish/Colour
①	Body	PA	Light Grey
②	Plate	Steel (SPHC)	Clear Zinc Chromate
③	Wheel	PU	Dark Grey
④	Brake	PA	
⑤	Rear Bumper	Elastomer (TPE)	

※The material will be changed to PP/TPE when the stock runs out.

Item Name	Type	A	Load Capacity N/pc	Load Capacity kgf/pc	Weight (g)
GS-EX-100PS	With Brake	139	980	100	888
GS-EX-100P	Without Brake	105			873