

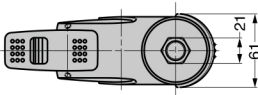
# DUAL BRAKE SYSTEM CASTER GS-EX-100N Threaded Bolt Type

**LOAD CAPACITY 980 N**

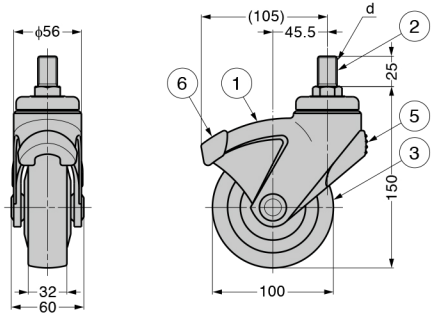
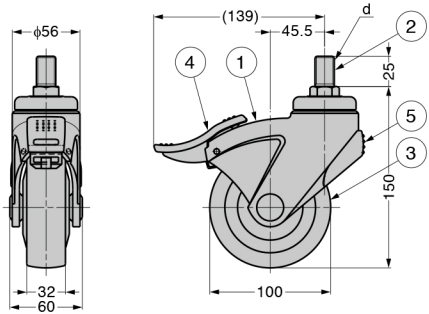
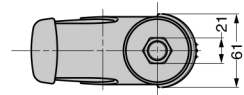


- Brake indicator for easy recognition.
  - Locks both wheel and swivel.
  - Large brake lever for easy operation.
- Since the brake lever protrudes the wheel, operation is unaffected even if the installation position of the caster is slightly inward from the edge of upper cabinet.
- Ball bearing equipped in both swivel and wheel to provide smooth movement.
  - Rear bumper protects from impacts.
  - W/o brake type has also front rubber bumper to protect foot.

[w/ Brake]



[w/o Brake]



No.	Part Name	Material	Finish/Colour
①	Body	PA	Light Grey
②	Threaded Bolt	Steel (SWCH)	Clear Zinc Chromate
③	Wheel	PU	Dark Grey
④	Brake	PA	
⑤	Rear Bumper	Elastomer (TPE)	
⑥	Front Bumper		

※The material will be changed to PP/TPE when the stock runs out.

Item Name	Type	d	Load Capacity N/pc	Load Capacity kgf/pc	Weight (g)
GS-EX-100N12S	w/ Brake	M12	980	100	680
GS-EX-100N12	w/o Brake				641
GS-EX-100N16S	w/ Brake				686
GS-EX-100N16	w/o Brake	M16			661