

STAINLESS STEEL CASTER **GS-SUS-SJ** Plate Type

LOAD CAPACITY 686-1176 N **SUS**



- Made of 304 stainless steel with excellent corrosion resistance. Ideal for humid environments, laboratories, and kitchens, etc.

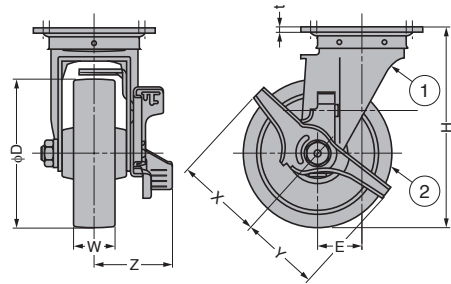
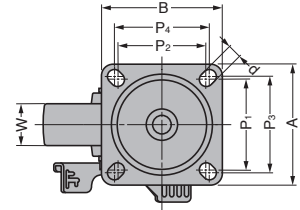
[Remarks]

- When ordering, please confirm the type of wheel and the presence/absence of brake in the table below.

Picture above is a urethane wheel with built-in bearing.



N: Polyamide wheel
 NWB: Polyamide wheel (w/ Bearing)
 UWB: Polyurethane wheel (w/ Bearing)



Drawing above shows the model with brake.

No.	Material	Finish/Colour
①	Stainless Steel (SUS304)	Polished
②	Polyamide	As below
	Urethane	

w/ B: With Bearing

Item Name	Type	Wheel	Wheel Colour	D	W	H	E	A	B	P ₁	P ₂	P ₃	P ₄	d	t	X	Y	Z	Load Capacity N/pc	Load Capacity kg/pc	Weight (g)														
GS-SUS-SJ65-S-N	With Brake	Polyamide	White	65	25	85	29	70	58	55	42	-	-	8.8	2	38	37	45	686	70	320														
GS-SUS-SJ65-S-UWB	Without Brake	Urethane (w/B)	Ivory/Dark Brown																		340														
GS-SUS-SJ65-N	With Brake	Polyamide	White																75	93	28	-	-	-	-	-	-	-	-	-	-	-	784	80	280
GS-SUS-SJ65-UWB	Without Brake	Urethane (w/B)	Ivory/Dark Brown																																300
GS-SUS-SJ75-S-N	With Brake	Polyamide	White	100	32	132	35	90	68	68	71	71	11	3	-	55	53	60	1176	120	950														
GS-SUS-SJ75-S-UWB	Without Brake	Urethane (w/B)	Ivory/Dark Brown																		1030														
GS-SUS-SJ75-N	With Brake	Polyamide	White																1070	-	-	-	-	-	-	-	-	-	-	-	-	-	-	-	-
GS-SUS-SJ75-UWB	Without Brake	Urethane (w/B)	Ivory/Dark Brown																																
GS-SUS-SJ100-S-N	With Brake	Polyamide	White	100	32	132	35	90	68	68	71	71	11	3	-	55	53	60	1176	120	900														
GS-SUS-SJ100-S-NWB	Without Brake	Polyamide (w/B)	White																		940														
GS-SUS-SJ100-S-UWB	With Brake	Urethane (w/B)	Ivory/Dark Brown																1070	-	-	-	-	-	-	-	-	-	-	-	-	-	-	-	-
GS-SUS-SJ100-N	Without Brake	Polyamide (w/B)	White																																
GS-SUS-SJ100-NWB	With Brake	Urethane (w/B)	Ivory/Dark Brown	900																															
GS-SUS-SJ100-UWB	Without Brake	Urethane (w/B)	Ivory/Dark Brown	940																															