

STAINLESS STEEL CASTER **GS-SUS-SK** Plate & Non-swivel Type

LOAD CAPACITY 686-1176 N

SUS



Urethane wheel with bearing shown.

- Made of 304 stainless steel with excellent corrosion resistance. Ideal for humid environments, laboratories, and kitchens, etc.

[Remarks]

- The mounting hole shapes vary depending on the size of the caster.
- When ordering, please confirm the type of wheel in the table below.

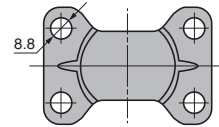


N: Polyamide wheel

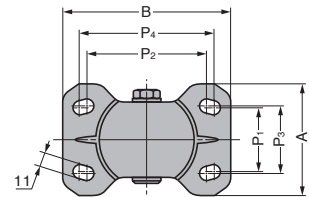
NWB: Polyamide wheel (w/Bearing)

UWB: Polyurethane wheel (w/ Bearing)

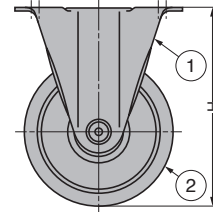
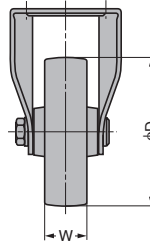
[Mounting Hole]



For φD65-75 mm



For φD100 mm



No.	Material	Finish/Colour
①	Stainless Steel (SUS304)	Polished
②	Polyamide	As below
	Urethane	

w/ B: With Bearing

Item Name	Wheel	Wheel Colour	D	W	H	A	B	P ₁	P ₂	P ₃	P ₄	Load Capacity N/pc	Load Capacity kgf/pc	Weight (g)
GS-SUS-SK65-N	Polyamide	White	65	25	85	47	70	28	55	-	-	686	70	160
GS-SUS-SK65-UWB	Urethane (w/ B)	Ivory/Dark Brown			85									180
GS-SUS-SK75-N	Polyamide	White	75	32	93	78	110	45	80	50	90	784	80	200
GS-SUS-SK75-UWB	Urethane (w/ B)	Ivory/Dark Brown			93									220
GS-SUS-SK100-N	Polyamide	White	100	32	132	78	110	45	80	50	90	1176	120	570
GS-SUS-SK100-NWB	Polyamide (w/ B)													650
GS-SUS-SK100-UWB	Urethane (w/ B)													Ivory/Dark Brown