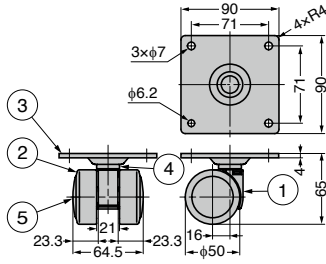
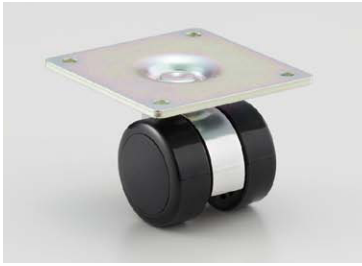


# TWIN WHEEL CASTER **GS-GX-W50GP** Plate Type

**LOAD CAPACITY 1960 N**



- Low profile and heavy duty. Ideal for OA equipment, etc.
- Stable twin wheel structure provides smooth movement and excellent durability.
- Use in combination with GS-GX-W50K for easy handling.

**[Remarks]**

- The load capacities in the table below indicate the loads when moving on a smooth surface.

No.	Part Name	Material	Finish/Colour
①	Body	Aluminium Alloy	Barrel Polished
②	Wheel	POM	Black
③	Plate	Steel (SPCC)	Coloured Zinc Chromate
④	Shaft	Steel (SWCH)	
⑤	Cover	PA	Black

Item Name	Load Capacity N/pc	Load Capacity kg/pc	Weight (g)
GS-GX-W50GP	1960	200	420