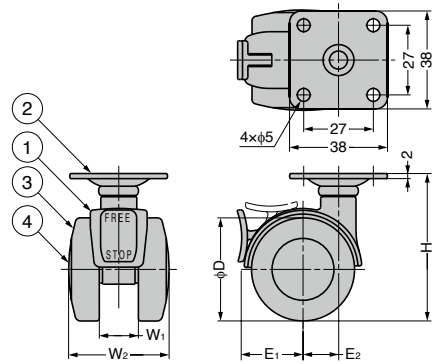


TWIN WHEEL CASTER **GS-DB, GS-DS** Plate Type

LOAD CAPACITY 490~784 N



Drawing above shows the model with brake.

No.	Part Name	Material	Finish/Colour
①	Body	Zinc Alloy (ZDC)	Chrome
②	Plate	Steel	Clear Zinc Chromate
③	Wheel	PA	Black
④	Cover	Stainless Steel (SUS430)	-

Item Name	Type	D	W ₁	W ₂	H	E ₁	E ₂	Load Capacity N/pc	Load Capacity kgf/pc	Weight (g)
GS-DB-40P	With Brake	40.5	15	39.5	58.5	27	12.5	490	50	130
GS-DS-40P	Without Brake					23.5				117
GS-DB-50P	With Brake	50.5	18	46	71.5	33.5	17	784	80	210
GS-DS-50P	Without Brake					29				196