

SLIDING DOOR ROLLER GS-JC100 V Type w/ Bracket

LOAD CAPACITY 3430~24500 N

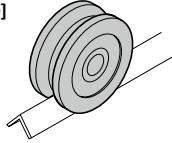


- For wheel diameter above $\phi 75$, bearing with rubber seal (dustproof seal type) provides excellent water resistance.
- Ideal for exterior application.
- 2 bearings are used for wheel diameter above $\phi 75$, providing smooth movement even for heavy doors.
- Gap between bracket and wheel absorbs deformation and allows for smooth movement.

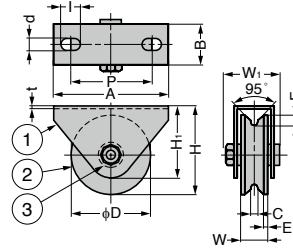
[Applications]

- Gates, etc.

[Application Example]



No.	Part Name	Material	Finish
①	Bracket	Steel (SPHC)	Clear Zinc Chromate
②	Wheel	Ductile Cast Iron	Black Enamel Finish
③	Bearing	-	-



Item Name	D	W	W ₁	A	B	C	E	F	H	H ₁	d	l	P	t	Load Capacity N/2 pcs	Load Capacity kgf/2 pcs	Weight (kg)
GS-JC100-50V	50	20	41	100	33	5	4.7	6	64	60	11	70	3.2	3430	350	0.5	
GS-JC100-60V	60			38			5.7	8	67	58				4410	450	0.7	
GS-JC100-75V	75	26	46	120	37	7	4.5	8.5	88	76.5	11	94	3.2	5880	600	1	
GS-JC100-90V	90						4.6	9	95.5					6860	700	1.3	
GS-JC100-100V	105	28	50	145	39.5		4.8	11	118	93.5	15	115		7840	800	1.7	
GS-JC100-120V	120								125.5					9800	1000	2	
GS-JC100-150V	150	43	88	250	60	13.5	7.7	18	165	137	20	35	6	19600	2000	6.4	
GS-JC100-200V	200	50	105	290	70	15	7	20	215	160				216	24500	2500	11