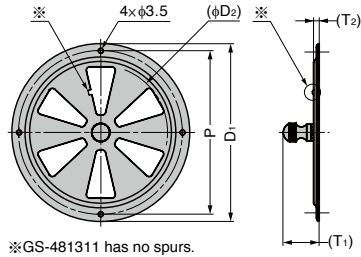


STAINLESS STEEL ADJUSTABLE VENTILATOR GS-4813

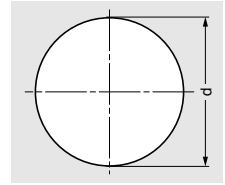
SUS



- Air flow is adjustable by turning the knob.
- The knob is tight for anti-vibration.
- Suitable for various applications such as marine and housing, etc.



[Cut Out Dimensions]



Item Name	Material	Finish	D ₁	D ₂	P	T ₁	T ₂	d	≒Max. Exhaust Area mm ²	Weight (g)
GS-481311	Stainless Steel	Satin	102	77	92	24.4	2.7	77~80	1835	61
GS-481312	(SUS304)		127	95	117	25.6	3.9	95~100	2860	86