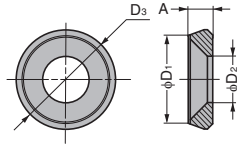


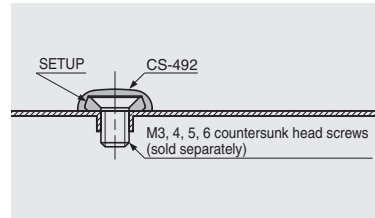
STAINLESS STEEL COUNTERSUNK WASHER SETUP For M3, M4, M5, M6



- For surface mount of M3, M4, M5 and M6 countersunk head screw.
- Conceals screw head when used with cap CS-492.
- Washers for M3, M5 and M6 are newly launched.



[Installation]

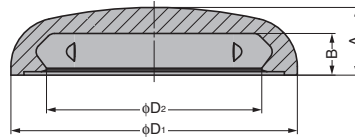


RoHS	CAD	Item Code	Item Name	Type	Material	Finish	A	D ₁	D ₂	D ₃	Weight(g/pack)	Pack(pcs)	Box(pack)
✓	3D	120-038-172	SETUP-SUS-M3-P100	M3	Stainless Steel (SUS303)	Plain	1.9	6.5	4	9	60	100	10
✓	3D	120-038-171	SETUP-M4-P100	M4	Brass			8	5	13	150	100	20
✓	3D	120-038-173	SETUP-SUS-M4-P100		Stainless Steel (SUS303)		3	10.6	6	14	202	100	5
✓	3D	120-038-174	SETUP-SUS-M5-P100	M5	Stainless Steel (SUS303)		3.7	12.8	7	15	266	100	5
✓	3D	120-037-149	SETUP-SUS-M6-P100	M6									

CAP FOR SETUP CS-492 For M3, M4, M5, M6



- Conceals screw head when used with countersunk washer SETUP for M3, M4, M5 and M6.
- Caps for M3, M5 and M6 are newly launched.



RoHS	CAD	Item Code	Item Name	Type	Material	Colour	A	B	D ₁	D ₂	Weight (g/pack)	Pack (pcs)	Box (packs)	Carton (packs)
✓	3D	120-038-067	CS-492-M3-IV-P100	M3	PE	Ivory	3.4	2.1	12.5	9	16	100	20	200
✓	3D	120-038-069	CS-492-M3-WT-P100			White						100	20	200
✓	3D	120-038-068	CS-492-M3-LGR-P100			Light Grey						100	20	200
✓	3D	120-038-066	CS-492-M3-DGR-P100			Dark Grey						100	20	200
✓	3D	120-038-073	CS-492-M4-IV-P100	M4	PE	Ivory	3.9	2.4	16.5	12.4	23	100	20	200
✓	3D	120-038-076	CS-492-M4-WT-P100			White						100	20	200
✓	3D	120-038-071	CS-492-M4-BR-P100			Brown						100	20	200
✓	3D	120-038-070	CS-492-M4-BL-P100			Black						100	20	200
✓	3D	120-038-075	CS-492-M4-SGR-P100			Grey						100	20	200
✓	3D	120-038-074	CS-492-M4-LGR-P100			Light Grey						100	20	200
✓	3D	120-038-072	CS-492-M4-DGR-P100	Dark Grey	100	20	200							
✓	3D	120-038-078	CS-492-M5-IV-P100	M5	PE	Ivory	4.7	3.2	17.5	14	35	100	10	100
✓	3D	120-038-080	CS-492-M5-WT-P100			White						100	10	100
✓	3D	120-038-079	CS-492-M5-LGR-P100			Light Grey						100	10	100
✓	3D	120-038-077	CS-492-M5-DGR-P100			Dark Grey						100	10	100
✓	3D	120-038-082	CS-492-M6-IV-P100	M6	PE	Ivory	5.7	3.9	18.5	15	47	100	5	50
✓	3D	120-038-084	CS-492-M6-WT-P100			White						100	5	50
✓	3D	120-038-083	CS-492-M6-LGR-P100			Light Grey						100	5	50
✓	3D	120-038-081	CS-492-M6-DGR-P100			Dark Grey						100	5	50

The quantity of the M4 type will change to be as follows when the current stock runs out.
 - 10 packs/box | 100 packs/carton