

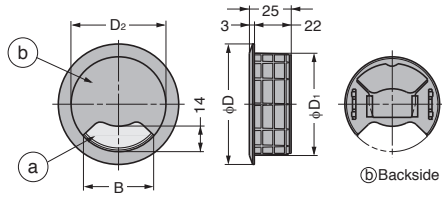
# CABLE GROMMET GS-V60, GS-V80



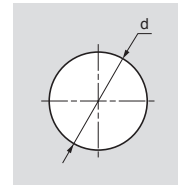
- Remove the part ㉔ for thin cables and keep on the backside pocket.
- Cap ㉕ is removable for wide opening.

**[Remarks]**

- Be sure to read the "Cautions"



**[Cut Out Dimensions]**



Item Name	Colour	Material	D	D <sub>1</sub>	D <sub>2</sub>	B	d	Weight (g)
GS-V60W	White	HIPS	72	60.5	56.7	41	60.5	25.5
GS-V60BE	Beige							
GS-V60DBE	Dark Beige							
GS-V60SL	Silver	ABS						
GS-V60RG	Light Brown	HIPS						
GS-V60B	Black							
GS-V80W	White							
GS-V80BE	Beige	HIPS	92	80.5	77	50	80.5	39
GS-V80DBE	Dark Beige							
GS-V80SL	Silver							
GS-V80RG	Light Brown	HIPS						
GS-V80B	Black							