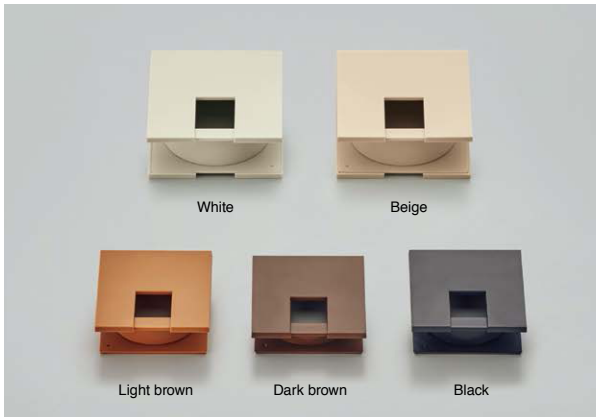
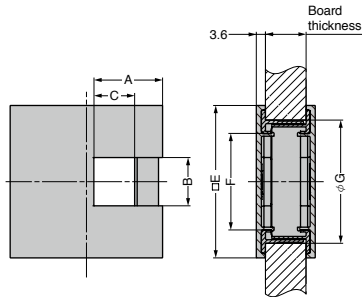
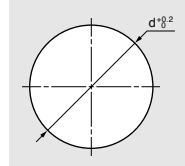


CABLE GROMMET **GS-LSUK/GS-LSK** Square/Double-sided



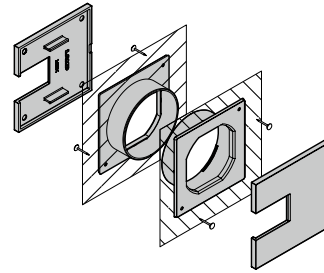
- Double-sided model which is suitable for vertical use.
- Applicable board thickness: 12-18mm, 16-26mm, 25-40mm.
- The cap is removable for wide opening.
- Square/one-sided model is also available.
- Round/double-sided and oval/double-sided models are also available.
- The body can be fixed with nails to prevent rotation. When installing, please use nails to pierce into the 2 thin-walled locations on the backside of the body.
- Recommended nail: Pan head nail 1.2 × 10
 - Head diameter : 4mm or less
 - Shank diameter: 1.9mm or less

[Cut Out Dimensions]



GS-LSU60K / GS-LS60K / GS-LS76K

[Components]



[GS-LSU60K] Size: 60 mm / Low-profile type

Item Name	Colour	Material	A	B	C	E	F	G	d	Board Thickness	Weight (g)
GS-LSU60K-WT	White	ABS	27	19	16.1	60	38	48.5	48	12-18	24
GS-LSU60K-BE	Beige										
GS-LSU60K-LBR	Light Brown										
GS-LSU60K-DBR	Dark Brown										
GS-LSU60K-BL	Black										

[GS-LS60K] Size: 60 mm

Item Name	Colour	Material	A	B	C	E	F	G	d	Board Thickness	Weight (g)
GS-LS60K-WT	White	ABS	27	19	16.1	60	38	48.5	48	16-26	25
GS-LS60K-BE	Beige										
GS-LS60K-LBR	Light Brown										
GS-LS60K-DBR	Dark Brown										
GS-LS60K-BL	Black										

[GS-LS76K] Size: 76 mm

Item Name	Colour	Material	A	B	C	E	F	G	d	Board Thickness	Weight (g)
GS-LS76K-WT	White	ABS	34	22	22.8	76	53.5	64.5	64	25-40	42
GS-LS76K-BE	Beige										
GS-LS76K-LBR	Light Brown										
GS-LS76K-DBR	Dark Brown										
GS-LS76K-BL	Black										