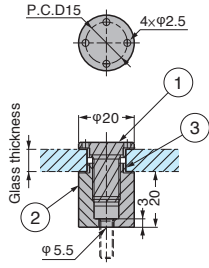
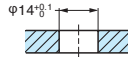


POINT FIX GS-PE-20ST



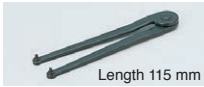
Cut Out Dimensions



No.	Part Name	Material
①	Pin	Stainless Steel
②	Clamp	(SUS304)
③	Spacer	POM

Item Name	Glass Thickness	T-shaped Hold	Special Tool	Weight (g)
GS-PE-20ST	8~12	GS-PTH-5	GS-Z059	56

Special tool GS-Z059



T-shaped holder GS-PTH-5



[Remarks]

- Special tool GS-Z059 is required for installation.

[Sold Separately]

- Special tool GS-Z059
- T-shaped holder GS-PTH-5 for point fix.

[Recommended Screws]

- Hexagon socket head cap screw M5