

# POINT FIX



Point fix is a part for fixing glass to structure or frame when using glass as a wall or panel.



## Zwei L

Zwei L is the flagship brand of Sugatsune and represents premium Japanese hardware quality. Zwei L stands for "Zwei Lichten" in German: a dual highlight of mirror finish and lustrous satin on a faceted profile. Manufactured from solid billets of the finest quality 316 stainless steel, Zwei L brings the space luxury and dazzles your eyes.



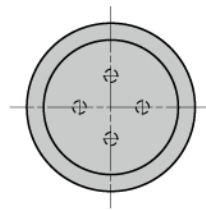
Video Link



# Zwei L

## Zwei L STAINLESS STEEL POINT FIX GS-ZL-2801

SUS316 TEMPERED GLASS



- Superior "Zwei L Finish".

Zwei L represents the very pinnacle of ultra-premium Japanese hardware design. Contrasting bands of mirror finish and lustrous satin on a faceted profile give jewel like highlights which flatter any architectural space.

### [Remarks]

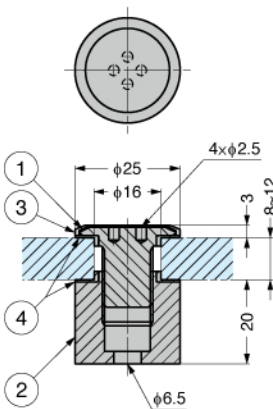
- Special tool (sold separately) is required for installation.

### [Sold Separately]

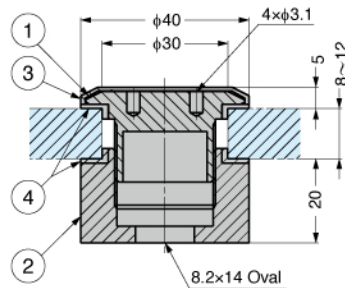
- Special tool GS-Z059, GS-Z058



No.	Part Name	Material	Finish / Colour
①	Pin	Stainless Steel (SUS316)	Plain
②	Clamp		Polished (Partially)
③	Cover		Zwei L Finish
④	Spacer	POM	Black



GS-ZL-2801-25



GS-ZL-2801-40

### [Body]

Item Name	Glass Thickness	Special Tool	Weight (g)
GS-ZL-2801-25	8~12	GS-Z059	115.2
GS-ZL-2801-40		GS-Z058	260.0

### [Special Tool] Sold Separately

Item Name	Length	Weight (g)
GS-Z059	115	38
GS-Z058	160	111