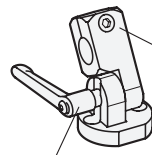
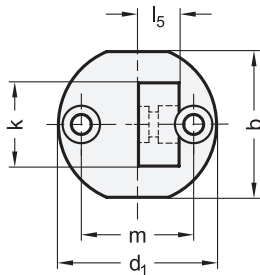


Clamping kit
GN 511.1, type SMounting clamp connector joint
with swivel mounting clamp
GN 482Clamping kit
GN 511.1, type K

k	b	d ₁	d ₂ For screw	d ₃ Swivel bore	d ₄	l ₁	l ₂	l ₃	l ₄	l ₅	m	Clamping kit for d ₃ Type K 	Clamping kit for d ₃ Type S 
16	29	31,5	M 4	4,5	7,5	25	17	7	3	8	22	GN 511.1-M4-16-K	GN 511.1-M4-16-S
20	35	38	M 5	5,5	9	30	20	8	2,5	10	27	GN 511.1-M5-20-K	GN 511.1-M5-20-S
25	41	45	M 6	6,5	10,5	37	24,5	10	4	12,5	32	GN 511.1-M6-25-K	GN 511.1-M6-25-S
30	44	50	M 6	6,5	10,5	44,5	29,5	12,5	6,5	15	36	GN 511.1-M6-30-K	GN 511.1-M6-30-S

Specification

- Aluminum
- Matte finish, tumbled **MT**
- Anodized black **ELS**
- Stainless Steel Characteristics* → Page 2166
- RoHS

Accessory

- Clamping Kits GN 511.1 → Page 1805



Information

Base plate swivel mounting clamps GN 485 can be combined with swivel mounting clamps GN 482, T-swivel mounting clamps GN 483 and attachment mounting clamps GN 484 with the same k dimensions into mounting clamp connector joints. Clamping kits GN 511.1 with screw (type S) and with adjustable hand lever (type K) are available for this purpose. The article code for ordering is shown in the dimensional table.

The bore distance m of base plate swivel mounting clamps GN 485 corresponds to base plate mounting clamps GN 473, mounting clamps GN 477, flanged mounting bolts GN 480 as well as retaining magnets GN 51.6.

see also...

- Product Family Standard Parts for Profile Systems* → Page 18
- Clamp Mountings GN 477* → Page 1790
- Flanged Bolts GN 480* → Page 1800
- Retaining Rods / Retaining Tubes GN 480.1* → Page 1833
- Base Plate Mounting Clamps GN 175 (Plastic)* → Page 1807

How to order

GN 485-16-MT

1 k

2 Finish