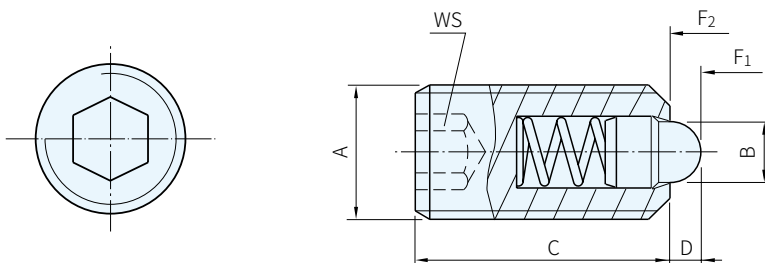




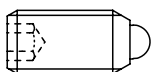
本體		銷子		彈簧
材質	處理	材質	處理	材質
鋼	染黑	鋼	硬化、染黑	SUS
SUS303	-	SUS303	氮化	



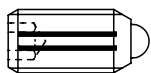
鋼 品號	質量 g	庫存	不銹鋼 品號	質量 g	庫存	備註	A	B	C	D	WS	荷重(N)	
												F ₁ ≈	F ₂ ≈
22030.0104	0.6	•	22030.0304	0.7	•	輕荷重	M4×0.7	1.8	12	1.5	2.0	4.5	12.5
22030.0105	1.3	•	22030.0305	1.2	•		M5×0.8	2.4	14	2.0	2.5	5.0	13.0
22030.0106	1.9	•	22030.0306	2.1	•		M6×1	2.7	15	2.0	3.0	6.0	17.0
22030.0108	4.2	•	22030.0308	4.2	•		M8×1.25	3.8	18	2.0	4.0	16.0	33.0
22030.0110	8.5	•	22030.0310	8.6	•		M10×1.5	4.5	23	2.5	5.0	19.0	42.0
22030.0112	13.0	•	22030.0312	13.0	•		M12×1.75	6.2	26	3.5	6.0	22.0	57.0
22030.0116	32.0	•	22030.0316	32.0	•		M16×2	8.5	33	4.5	8.0	38.0	78.0
22030.0120	67.0	•	22030.0320	67.0	•		M20×2.5	10.0	43	6.5	10.0	39.0	81.0
22030.0124	106.0	•	22030.0324	104.0	•		M24×3	13.0	48	8.0	12.0	72.0	155.0
22030.0146	2.0	•	22030.0346	1.9	•		重荷重	M6×1	2.7	15	2.0	3.0	11.0
22030.0148	4.2	•	22030.0348	4.4	•	M8×1.25		3.8	18	2.0	4.0	23.0	59.0
22030.0150	8.5	•	22030.0350	8.6	•	M10×1.5		4.5	23	2.5	5.0	20.0	54.0
22030.0152	12.0	•	22030.0352	14.0	•	M12×1.75		6.2	26	3.5	6.0	38.0	96.0
22030.0156	32.0	•	22030.0356	32.0	•	M16×2		8.5	33	4.5	8.0	50.0	100.0
22030.0160	67.0	•	22030.0360	68.0	•	M20×2.5		10.0	43	6.5	10.0	52.0	133.0
22030.0164	106.0	•	22030.0364	105.0	•	M24×3		13.0	48	8.0	12.0	91.0	233.0

WA) 注意

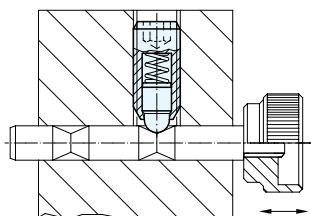
- ・使用溫度MAX.250℃
- ・1N=0.101972kgf
- ・輕荷重定位珠牙部無雷射線



- ・重荷重定位珠牙部有兩條雷射線



EX. 使用例



訂貨： 交期： 天

22030.0104